

CLINICAL INDICATIONS

Reverso is a Class II device intended for the treatment of skin conditions requiring regeneration of the dermal matrix or resurfacing of the epidermis.



BEFORE / AFTER



REVERSO Deep Fractional RF System Specifications

Max Energy	Max Power	Frequency	Disposable Tips	Tip Area	Touch Panel (x2)
124 mJ/ pin	10W/ pin	460 KHz	Variable tips, 44/ 88/ 176 pins	~ 2 cm ²	Touch screen, 10.4 inch + Touch panel on applicator

Technical Specifications

Electrical Rating: 100-240V 50/60 Hz, 100VA

Dimensions: 13in x 13in x 13in (WxDxH)

Weight: Body 11 lb | Applicator 0.44 lb

ABOUT NYLO AESTHETICS

NYLO Aesthetics is a leading distributor of aesthetic medical devices, with a portfolio of products offering best-in-class clinical results and patient experiences. NYLO globally sources innovative, state-of-the-art technology for U.S. medical offices, including dermatologists, plastic surgeons, and cosmetic practitioners, as well as premier medi-spas, and luxury hotel and day spas. With a large showroom and training facility in New York City, and offices in key markets nationwide, NYLO offers an immersive, hands-on experience.



65 West 36th Street | 10th FL | New York, NY 10018

800-953-5150 | contactus@nyloaesthetics.com

www.nyloaesthetics.com

DEEP FRACTIONAL RF



REVERSO
REVERSE SKIN AGING



red dot winner 2022

THE DEEP FRACTIONAL RF TECHNOLOGY

Reverso is an advanced, Deep Fractional RF device that enables effective skin regeneration and resurfacing. The device incorporates several innovative technological solutions intended to guarantee patient-tailored treatments and optimal clinical results. The objective of Deep Fractional RF technology is to cause controlled thermal destruction to the skin, whose healing process will result in skin rejuvenation and remodeling.

PHYSIOLOGICAL IMPACT

Reverso generates confined radio frequency currents that transmit to the skin through an array of tiny needles. When the electric energy penetrates the skin, it is converted into high heat energy. The high heat causes controlled thermal destruction in tiny spots on the skin, whose healing processes result in skin regeneration and resurfacing.

The physiological impact of Deep Fractional RF on the skin is two-fold:

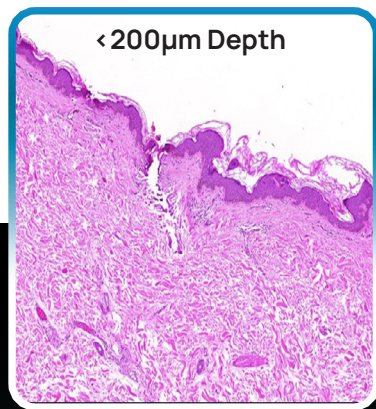
- Tissue ablation - Tissue destruction by vaporization, through the pins' entry path into the skin. The natural healing processes of this local and controlled destruction will lead to tissue rejuvenation, all the way from the dermis to the stratum corneum.
- Protein coagulation alongside the ablative area, causing inflammation, whose healing processes trigger dermal regeneration.

SKIN REGENERATION SEQUENCE

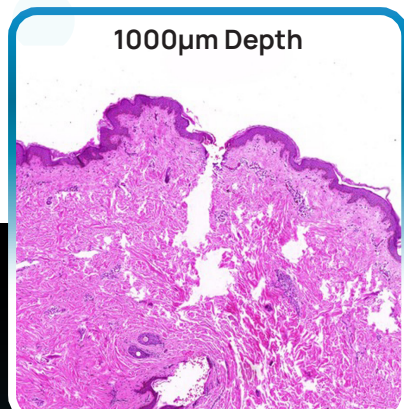
1 High heat energy along the entry path of the tiny pins into the skin (tissues reach temperature of ~100 °C) causes deep yet narrow ablation - destruction of skin tissues by vaporization. The tissue ablation creates tiny holes in the skin, from the stratum corneum to the dermis.

2 This ablation triggers two healing processes, both contributing to skin rejuvenation:

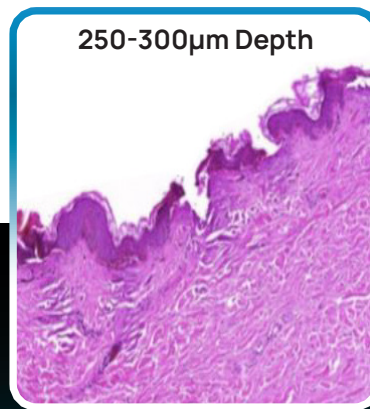
- Remodulation of the dermal matrix
- Epithelialization - Formation of new epithelial tissues in the epidermis, up to the stratum corneum.



<200µm Depth
Competitor Penetration



1000µm Depth
Reverso Deep Penetration



250-300µm Depth
Competitor Penetration

Skin sections following treatment by Reverso clearly show deep and narrow ablation and smaller-scale coagulation, all attributed to the PSD unique technology (Images courtesy of Emek Medical Center, Israel).

USER INTERFACE

Reverso offers an advanced and intuitive user interface, designed to optimize both user experience and clinical results. The device is controlled by a main touch screen (10.4 inch), as well as a touch panel on the applicator.

The diagram illustrates the user interface components:

- Tip Management Interface:** A vertical panel on the left showing three interchangeable tips: VS 176, VS 88, and VS 44. Each tip has a plus icon for selection and a minus icon for removal.
- Energy Tuning:** A large central circular dial displaying '50%'.
- Remote Connectivity*:** A top-right icon for remote access.
- Pulse Shape Selection:** A top-right menu for choosing pulse profiles.
- Energy Distribution Selection:** A top-right menu for selecting energy patterns.
- Repeat Mode:** A top-right icon for repeating pulses.
- Incoming Messages:** A top-right icon for notifications.
- Tip in Use:** A bottom-right indicator showing '449/1000 Pulses' and 'VS 176 Tip'.
- Settings:** A bottom-right menu with options like Auto Logout (30 min.), Audio, Information, Technician, Activation, User Manual, Messages, and Change Password. It includes 'Log Out' and 'Back' buttons.
- Start/Stop:** A bottom-center button with a play/pause icon and a 'SWIPE TO START' label.
- Pulse Counter:** A bottom-left button with minus and plus icons.
- Touch Panel on the Applicator:** A bottom-left physical button with minus and plus icons.

Reverso offers several interchangeable tips, for a highly customized treatment including 44, 88 and 176 pins.

Remote connectivity (*) enables tip management from the device, sending messages to/ from the device, and remote access to diagnostic statistics, so that users can optimize business practices and improve treatment efficiency.

TECHNOLOGICAL INNOVATION

SPEED

The Reverso tip emits electric pulses every second, and covers a work area of 194 mm² per pulse. The combination of a large tip and short pulse intervals offers enhanced efficacy, and therefore a better treatment experience for users and patients alike.

- Completing treatment in minimal time
- Significantly reducing the inflicted pain

POWER

Reverso generates energy of up to 10 W per pin. This high power causes substantial (yet controlled) thermal destruction in patient skin, whose healing process results in significant skin regeneration.

DEPTH OF PENETRATION

Reverso Implements the Very Sharp Pin (VSP) technology. The needles on its tips have a sharp edge, at an angle of 15°, facilitating penetration to the dermis, up to a depth of 1 mm.

ENERGY DISTRIBUTION

Reverso optimizes energy delivery to the skin in a scanning mode, so that the RF energy is evenly distributed across the treated area. The uniform energy distribution significantly reduces the risk of post-inflammatory hyperpigmentation.

CUSTOMIZED TREATMENT

The Reverso treatment is based on a variable pulse profile (VPP). The user friendly touch screen allows for the selection of the RF pulse shape based on a patient's skin condition. Treatments can be customized by skin type, clinical indication and individual sensitivity.

FAST PULSE

Parallel pulse, enabling quick energy transmission in half the time of the Flat Pulse. Suitable for broad skin areas, as well as for thin and sensitive skin (less-painful treatment).

FLAT PULSE

Constant energy throughout the pulse duration. Suitable for all skin types and skin conditions.

DOUBLE PULSE

Double pulse in varying power, for extra ablation and coagulation. Suitable for treatment of mature skin and for repairing scars.

SUPER PULSE

Peak-then-plateau pulse, for deeper ablation. Suitable for repairing scars (including post acne scars) and stretch marks, as well as for massive tissue remodeling in mature skin.

Energy Delivery Patterns - Impact on the Skin

Full Grid	Partial Grid	Alternating Lines
100% of the pins are active This pattern generates maximum ablation spots in the treatment area. Intended for rejuvenation of mature skin.	50% of the pins are active This energy delivery pattern is most suitable for resurfacing younger skin and for shrinking enlarged pores.	50% of the pins are active This pattern is specifically intended for skin tightening in a pre-defined direction.