



Applicator Flexibility

Three ergonomically designed applicators to treat large, small and sensitive areas.



BC APPLICATOR

Treats thighs, buttocks and abdomen. Incorporates RF and vacuum therapy.



FC APPLICATOR

Treats smaller, more sensitive areas such as the chin, neck, inner thighs, and underarms. Incorporates RF and vacuum therapy.



ST APPLICATOR

Treats lax and sagging skin, scar tissue and stretch marks. Incorporates RF and an integrated TEC skin cooling mechanism to protect the epidermal layer and ensure maximum comfort.

Patients undergoing treatments with ReShape have continuously experienced superior results.

EXCESS LOOSE SKIN/SKIN TIGHTENING



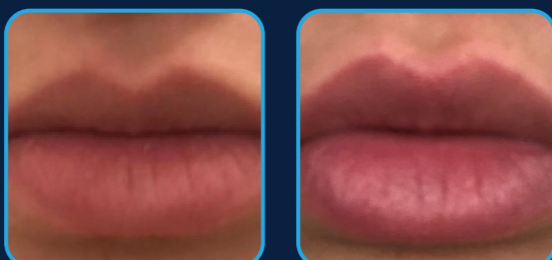
Before After 8 Treatments

WRINKLED/SAGGING SKIN REDUCTION



Before After 6 Treatments

LIP PLUMPING



Before After 1 Treatment

CELLULITE REDUCTION



Before After 8 Treatments

EXCESS LOOSE SKIN/SKIN TIGHTENING



Before After 8 Treatments

WRINKLED/SAGGING SKIN REDUCTION



Before After 2 Treatments



Product Specifications

FEATURES	BC	FC	ST
RF Power	Up to 50w	Up to 20w	Up to 130J/cm/3
RF Mode 1	0.8MHz	0.8MHz	0.8MHz
RF Mode 2	1.7MHz	1.7MHz	1.7MHz
RF Mode 3	2.45MHz	2.45MHz	2.45MHz
RF Mode 4	0.8MHz, 1.7MHz, 2.45MHz	0.8MHz, 1.7MHz, 2.45MHz	0.8MHz, 1.7MHz, 2.45MHz
Vacuum	Up to 500 mbar, Pulsed	Up to 500 mbar, Pulsed	none
Treatment Area	35mm x 30mm	15mm x 10mm	8mm x 8mm
Weight	19 kg. – Wheel base		
Dimensions (HxWxD)	45" x 35" x 40"		
Electrical Requirements	90-264 VAC; 50/60Hz; Single Phase		

About NYLO Aesthetics

NYLO Aesthetics, a new division of NY Laser Outlet, is a leading distributor of aesthetic medical lasers and technology. With an expansive showroom in NYC, as well as offices in Boston and Palm Beach, NYLO sources and distributes innovative, state-of-the-art aesthetic devices and consumables to U.S. medical offices, including dermatologists and plastic surgeons, as well as premier medi-spas, luxury hotel spas, and day spas.



New York | Boston | Palm Beach

NEW YORK CITY SHOWROOM

- 1.800.887.1966
- 15 W 28th St | Suite 10B | New York, NY 10001
- contactus@nyloaesthetics.com
- www.nyloaesthetics.com

V.1 - 1/2020

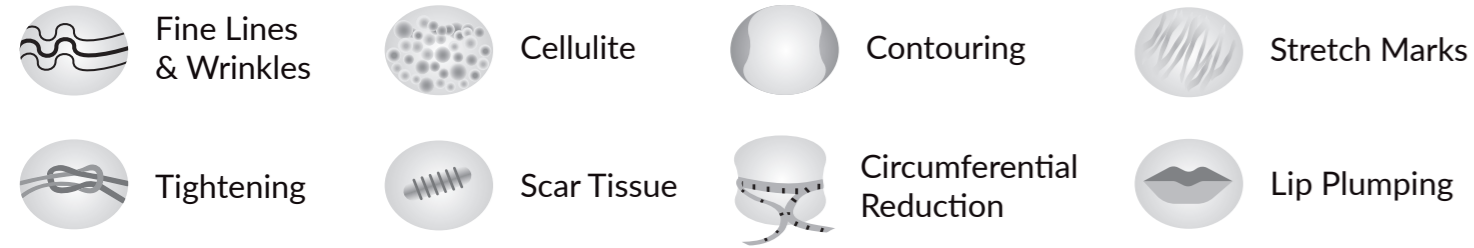
FIRMER, TIGHTER,
YOUNGER-LOOKING SKIN.



NON-INVASIVE TREATMENTS FOR SKIN TIGHTENING & BODY CONTOURING

COMBINING RADIO FREQUENCY AND VACUUM THERAPY.

ReShape, with groundbreaking CORE™ Technology, is a multi-frequency device featuring an advanced combination of radio frequency (RF) energy and vacuum therapy to safely and effectively provide non-invasive treatments for skin tightening, face and body contouring, and cellulite reduction. It can also be used to treat scar tissue and stretch marks.



Key Features

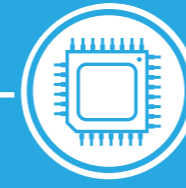


- Portable Workstation
- Multi-Use Technology
- Touch Screen Display
- Three RF Channels plus Multi-Channel Mode
- Four Vacuum Levels
- Three Applicators for Various Body Parts



THE RESHAPE™ ADVANTAGE

ReShape advanced technology ensures optimized clinical results by offering superior treatment control, precision targeting, and higher energy absorption for a broader dermal effect.



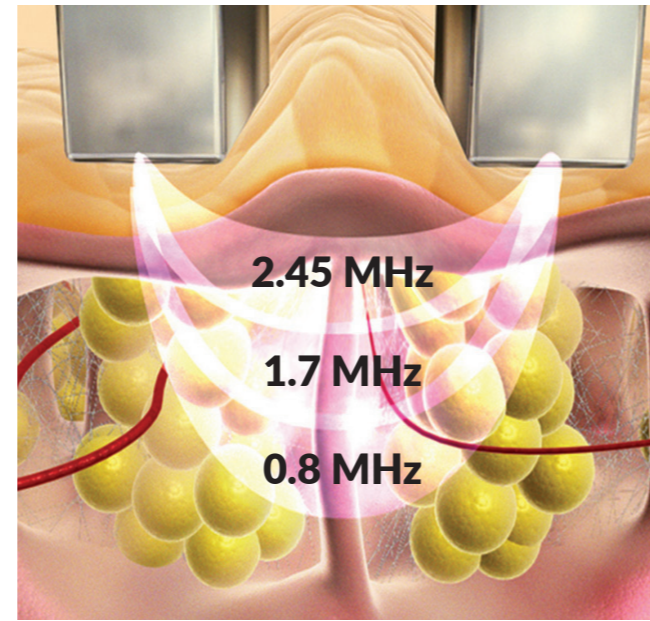
CORE™ TECHNOLOGY
Channeling Optimized RF Energy featuring three distinct RF channels (0.8MHz, 1.7MHz and 2.45MHz) plus a fourth multi-channel mode



MULTI-CHANNEL MODE
Combines all three RF channels. Speeds up heating process by targeting all dermal layers simultaneously.



VACUUM BOOST
Ensures deeper penetration of energy with four vacuum levels. Provides mechanical fibroblast stimulation and activates metabolism to shrink fat cells.



Advanced Technology

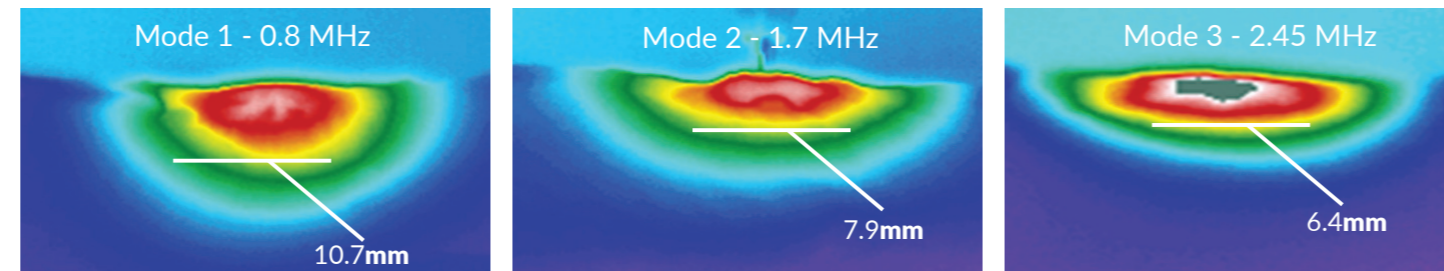
ReShape CORE™ Technology targets specific layers of skin to precisely heat the underlying network of collagen and elastin fibers, increasing metabolic rate of subcutaneous tissue. Following local heat treatment, collagen shrinks and the rigid collagen cross-links are broken, thereby restoring skin's flexibility and thickening the dermis. The result is firmer skin and enhanced elasticity, without the need for local anesthesia or pre and post treatment preparations.

The addition of vacuum therapy maximizes penetration of energy to the treatment area to increase local blood circulation, stimulate lymphatic drainage, and assist in the shrinkage of fat cell volume.

Multi-Channel Energy Penetration

The practitioner has full control of the depth of energy penetration by combining the different RF modes with the various options of vacuum levels. This allows the ideal treatment, depending upon the body area and patient sensitivity.

Infrared images of skin cross-section



PROVEN CLINICAL RESULTS

In vivo studies conducted to determine heat penetration, vacuum influence, as well as heating effect on blood circulation, using male domestic porcine (sus scrofa domesticus) under full anesthesia, at varying RF frequencies and vacuum levels.

These tests confirmed the validity of the technology. Practitioners can control penetration depth, target different tissues for different treatments, and attain efficacy temperatures in less time. The effectiveness of multiple frequencies and vacuum therapy used simultaneously results in quicker, shorter treatment sessions.

Vacuum Influence

Utilizing vacuum therapy in the BC & FC applicators provides for increased penetration of heat.

Applicator	Frequency	Vacuum Level	Depth Measured
FC	0.8MHz	1	8.0mm
	0.8MHz	4	10.7mm
	2.45MHz	1	4.2mm
	2.45MHz	4	6.4mm
BC	0.8MHz	1	11.3mm
	0.8MHz	4	18.6mm
	2.45MHz	1	6.2mm
	2.45MHz	4	11.8mm

Heating Effect on Blood Vessels

Subcutaneous fat was sectioned with PET (30u) Technique and stained with H&E.

The qualitative analysis shows the increased presence of red blood cells 48 hours following a ReShape treatment (see red arrows).

In addition, there is increased plasma fluid, evidence of increased blood circulation (see blue arrows).

