



NYLO AESTHETICS

HORIZON

EXPANDABLE TECHNOLOGY FOR MAXIMUM ROI

EXPANDABLE TECHNOLOGY FOR MAXIMUM ROI

COMPLETELY VERSATILE

Designed as a fully customizable powerhouse, the **HORIZON™** platform combines IPL, high-speed Diode, Nd:YAG and Er:YAG laser technologies in a portable platform system, designed for maximum effectiveness, safety and versatility. Its customizable laser configurations and IPL handpieces mean that the **HORIZON** can grow as your practice grows.

This expandable, multi-application platform allows practitioners to safely and effectively treat different indications in different skin types, age, and gender, without the need for disposables. With four technologies in one platform and over 30 treatment opportunities, **HORIZON** offers a fully upgradeable system for infinite possibilities.

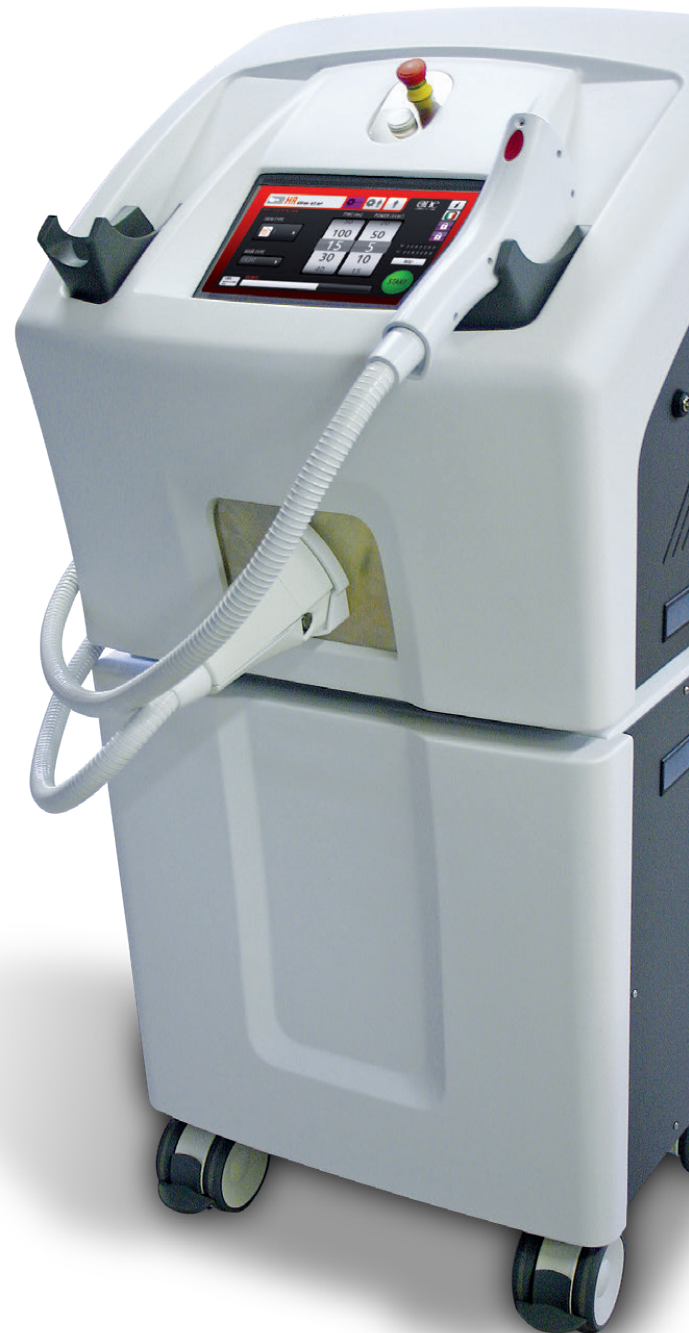
ALL-IN-ONE PLATFORM

The **HORIZON** is an all-in-one device that offers a wide range of treatments including, but not limited to, permanent hair reduction, skin rejuvenation, vascular and pigmented lesions, acne and skin resurfacing, scars and/or keloids, and tattoo removal.

- A single system solution offering four technologies
- 10.1" capacitive touch screen display
- Expandable and upgradeable platform
- Convenient plug and play software
- Automatic, semi-automatic and full manual control of treatment parameters
- Portable and includes convenient storage trolley
- No consumables
- User friendly interface

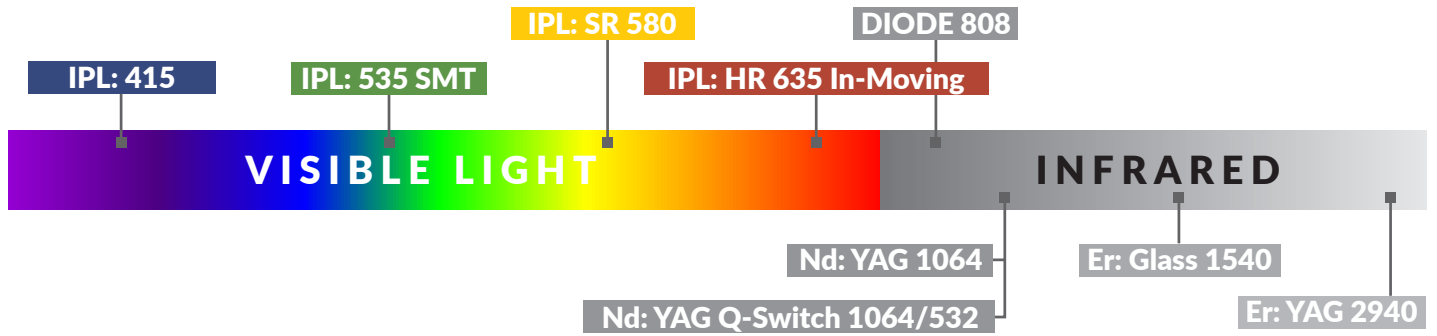
SUB-ZERO EFFECT

This **Sub Zero Effect** allows the **HORIZON** to reduce temperatures to -12°C (10.4°F). This process freezes and numbs the pain receptors allowing treatments to be performed at higher energy levels, creating better results, with virtually no pain.



ALL-IN-ONE DEVICE

IPL - Diode - Nd: YAG - Erbium



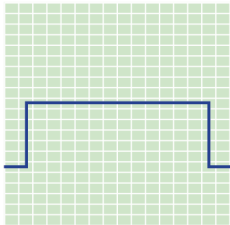
Source & Wavelength	Handpiece	Treatment Indications	Fitzpatrick Scale Skin Type
415-950 nm	IPL	Inflammatory acne (acne vulgaris)	I-V
535-950 nm	IPL	Vascular and pigmented lesions	I-V
580-950 nm	IPL	Skin rejuvenation Vascular and pigmented lesions Photofacial	I-V
635 nm	IPL	Permanent hair reduction	I-VI
Diode 808 nm	Laser	Permanent hair reduction	I-VI
Nd: YAG 1064 nm	Laser	Laser facials Vascular lesions and spider veins Broken vessels and capillarities Cherry angiomas Telangectasia	I-VI
Nd: YAG Q-Switch 1064/532 nm	Laser	Tattoo removal Skin rejuvenation	I-VI
Er: Glass 1540	Laser	Photo aging: fine lines, wrinkles, skin elastosis Large pores Post-surgical and post-traumatic scars Acne scars Melasma Stretch marks Vascular and pigmented lesions Onychomycosis	I-VI
Er: YAG 2940 nm	Laser	Skin resurfacing Treatment of mild wrinkles Keratosis Scar revision and acne scars Sun damaged freckles	I-VI

IPL WITH APC TECHNOLOGY

Adaptive Pulse Control (APC) is a proprietary technology of the **HORIZON** platform, used to deliver energy homogeneously over the entire pulse duration, eliminating dangerous energy spikes and burns, especially for the treatment of dark skin. For increased safety and effectiveness, APC works in both single or burst mode (train of pulses) to automatically adjust to the right pulse sequence and maintain stable energy.

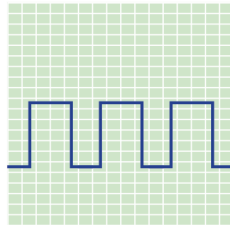
EXTREMELY EFFECTIVE AND SAFE

The **HORIZON** IPL has three different configurations of energy emission to safely target and treat a wide variety of skin types and skin conditions. APC configurations have a smooth shape to deliver “flat top” waves without energy spikes, and can repeat pulse sequences up to seven times in one shot to optimize treatments.



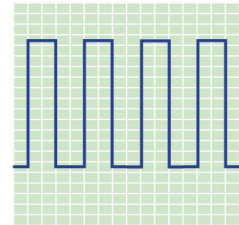
SMOOTH PULSE

Ideal for skin types V-VI, dark, thick hair, skin damage by age and sun exposure, and for pigmented and dark vascular lesions



LONG ADAPTIVE PULSE

Ideal for skin types III-IV, brown hair with medium thickness and vascular lesions



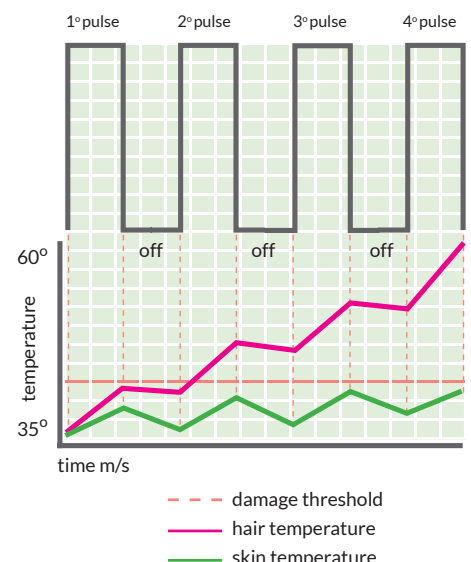
HIGH ADAPTIVE PULSE

Ideal for skin types I-II, light thin hair, small benign vascular lesions and light benign pigmented lesions

POWERFUL CONTACT SKIN COOLING AND FAST REPETITION RATE

The -12°C (10.4°F) **Sub Zero Effect** cools the skin temperature during the treatment to approximately $.2^{\circ}\text{C}$ (32.4°F). This process freezes and numbs the pain receptors allowing treatments to be performed at higher energy levels. The **Sub Zero Effect** allows for extremely fast procedures creating better results with virtually no pain and minimized risks of skin burns.

An optimized elliptic reflector maximizes the efficiency of light delivery. This results in the increase of the lamp lifetime. Combining both high quality, high pressure Xenon lamp and High Purity Sapphire Waveguide $16 \times 40 \text{ mm}$ (6.4 cm^2) allows for a more efficient delivery of light and improved skin cooling.





AC-415

Inflammatory Acne

With its 415-950nm wavelength, AC 415 disrupts sebaceous gland function, destroys bacteria, and provides anti-inflammatory effects



SR-580

Skin Rejuvenation / Photofacial

Ranges between 580 – 950 nm depending on treatment and skin type. Select between three DPC pulse modes- smooth, long or high. The handpiece's software automatically selects the optimal treatment parameters, but they can also be set manually.



VL-PL 535 SMT

Vascular Lesions

All the functions of the classic 535 with the addition of SMT (Sub Millisecond Technology), which emits intense pulsed light in fractions of milliseconds (0.5ms) to treat microvasculature. Optimized for precision to reach the exact 'endpoint', the visible purple bone, as used in dermoscopy.



HR 635 In-Moving

Permanent Hair Reduction

Low fluence (8 joules) head delays hair growth, and is ideal for IPL sessions during the summer. Numerous low fluency passes with In-Moving mode reduce the vascular flow to the bulb, with consequent slowdown in growth during the Anagen phase.

VASCULAR LESIONS



Before

After 2 Treatments

BENIGN PIGMENTED LESIONS



Before

After 5 Treatments

BENIGN PIGMENTED LESIONS



Before

After 3 Treatments

PERMANENT HAIR REDUCTION ON CHEST



Before

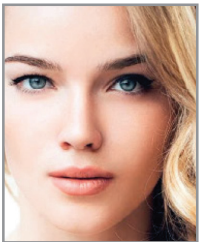
After 6 Treatments

DIODE TECHNOLOGY

ALL SKIN TYPES



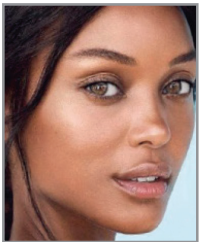
TYPE I



TYPE II



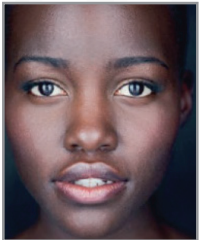
TYPE III



TYPE IV



TYPE V



TYPE VI

DIODE 808 Permanent Hair Reduction

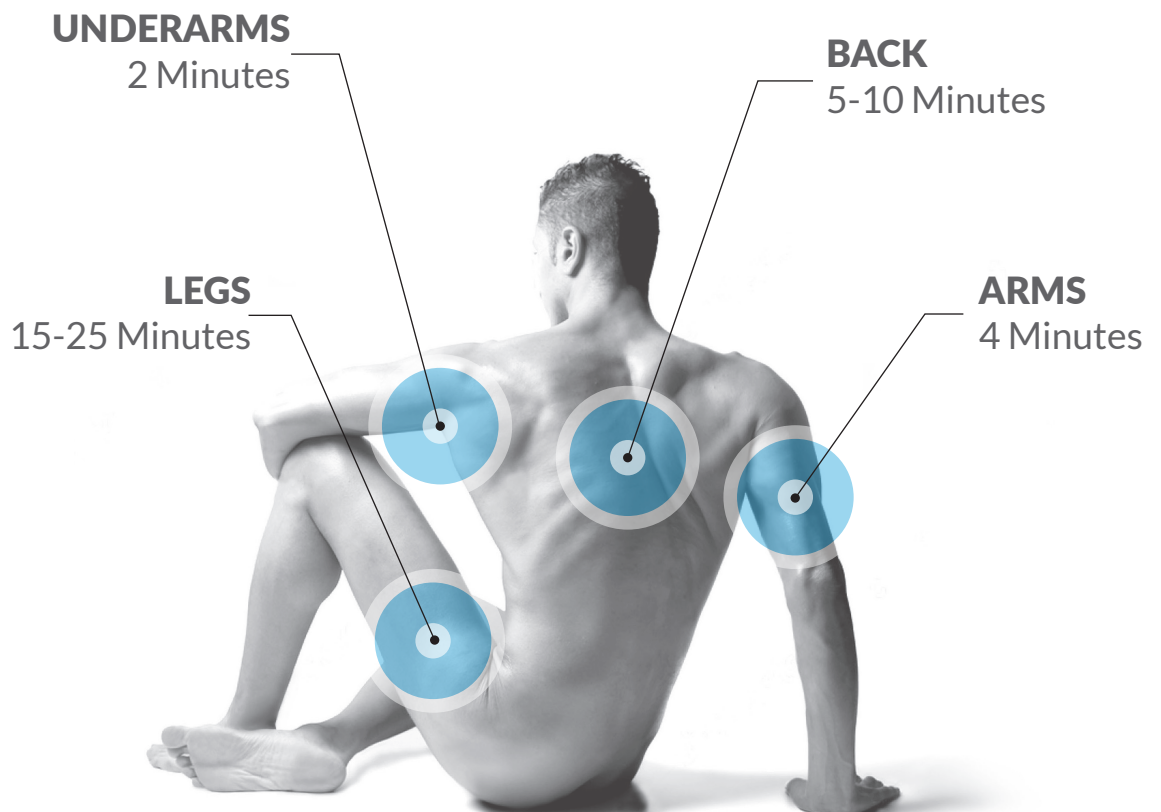
The power of the diode, in combination with the Sub-Zero Cooling Tip, differentiates the **HORIZON** technology, allowing for safe, effective and virtually painless treatments for all skin types and dark hair. IN MOVING technology and a double cooling integrated system, unique in the market offers three cooling levels: 0°C, -6°C - 12°C.

DIODE ADVANTAGES

- High speed, painless treatments
- Ultra High Power Diode 808 nm > 1600 W
- Spot size 1.2 x 1.4 = 1.7 cm² / sec
- Repetition rate up to 10 Hz
- Pulse width up to 200 ms
- Powerful skin cooler with sapphire guide
- Three Modality Settings: Automatic, In-Moving, Manual
- Two Modes: Standard & In-Moving
- Zero consumables



HIGHSPEED TREATMENT TIMES*



* Treatment durations are based on reported estimated times using the Diode fast mode.

An Nd:YAG laser (Neodymium-doped Yttrium Aluminum Garnet) is a solid state laser capable of producing a near-infrared wavelength that penetrates deep into the skin and is readily absorbed by hemoglobin and melanin chromophores. This creates a variable long pulse duration and an appropriate spot size, which significantly heats deep skin tissues, such as large blood vessels and vascular lesions.



Nd: YAG 1064 Vascular Lesions

This wavelength is absorbed by Hb (Hemoglobin) and can penetrate deep into the skin (almost 5 mm). The laser handpiece is lightweight, ergonomic and powerful. Uses 3-6-9 mm active cooled sapphire crystals to treat the largest treatable veins.



Nd: YAG Q-Switch 1064/532 Tattoo Removal and Skin Rejuvenation

A stable, high energy laser combining powerful energy emission (mega watts), and extremely short pulse duration (15ns), to safely and effectively treat the fragmentation of pigment. Combines 1064/532 nm wavelengths for the treatment of black and blue, and colored lesions.



Er: Glass 1540 Fractionated Non-Ablative Skin Resurfacing

Thermal stimulation of connective tissue without the complications of ablative treatments. The sapphire lens at the bottom of the tip makes the treatment more comfortable for the patient. The fractionated beam of energy vaporizes the skin tissue, while the gas released remains pressed under the lens, reducing the sensitivity to pain receptors.



Er: YAG 2940 Ablative Skin Resurfacing

An ablative laser that can be used in homogenous modes for skin resurfacing. It operates at the main peak of water absorption for ideal thermal diffusion, allowing for safer treatments with reduced risk of downtime. Pulse energy up to 3 Joules at 1.5 ms, variable pulse width from 1 to 1.5 ms and speed up to 5 Hz.

VASCULAR LESIONS ON LEG



Before

After 1 Treatment

VASCULAR LESIONS



Before

After 3 Treatments

HORIZON and its handpieces are intended for use in aesthetic, surgical and cosmetic applications in selective treatments required in the medical specialties of dermatology and general and plastic surgery. 510(k) FDA Premarket notification Number: K172413

IPL-APC TECHNOLOGY

Handpiece	Application	Fluence J/cm ²	Pulse width ms	Spot Size mm	Repetition Rate (Hz)
AC 415	Acne	5-15	15-100	16 x 40	.4-1.25
VL-PL 535 SMT	Vascular and Pigmented Lesions	0.5-25	0.5-99	16 x 40	.4-1.25
SR 580	Skin Rejuvenation	5-25	10-25	16 x 40	.4-1.25
HR 635 In-Moving	Permanent Hair Reduction	5-8	6	16 x 40	up to 3

LASER TECHNOLOGY

Handpiece	Application	Fluence J/cm ²	Pulse width ms	Spot Size mm	Repetition Rate (Hz)
Diode 808	Permanent Hair Reduction	up to 90	from 1 to 200	12 x 14	up to 10
Nd: YAG 1064	Vascular Lesions	30-200	up to 100	3-6-9	up to 1
Nd: YAG Q-Switch 1064/532 nm	Tattoo Removal	up to 217 (1064 nm) up to 153 (532 nm)	15 ns	1-5 mm (1064 nm) 8 mm (532 nm)	up to 10
Er: Glass 1540 Fractionated	Non-Ablative Skin Resurfacing	up to 70	10-15 ms	100-324 MTZ	up to 1
Er: YAG 2940 nm	Ablative Skin Resurfacing	up to 95 on Ø 2 mm spot	front 1 to 1.5	Ø mm 2,4,9 ablative Ø mm 9 microbeam	up to 5

DEVICE SPECIFICATIONS

Electrical requirements	110-240 V; 50/60 Hz; 1250 VA
Dimensions and weight	23.6 (W) x 22.8 (D) x 21.6 (H) in ³ ; 130 Lb. (without wheeled base) 23.6 (W) x 22.8 (D) x 46.5 (H) in ³ ; 194 Lb. (with wheeled base)

ABOUT NYLO AESTHETICS

NYLO Aesthetics is a leading distributor of aesthetic medical devices, with a portfolio of products offering best-in-class clinical results and patient experiences. NYLO globally sources innovative, state-of-the-art technology for U.S. medical offices, including dermatologists, plastic surgeons, and cosmetic practitioners, as well as premier med-spas, and luxury hotel and day spas. With a large showroom and training facility in New York City, and offices in key markets nationwide, NYLO offers an immersive, hands-on experience.



65 W 36th St. | 10th Floor | New York, NY 10018
 1.800.953.5150 | contactus@nyloaesthetics.com
www.nyloaesthetics.com